

4

3

2

1

THESE DRAWINGS AND SPECIFICATIONS ARE THE PROPERTY OF JBL INCORPORATED. THEY ARE ISSUED IN STRICT CONFIDENCE AND SHALL NOT BE REPRODUCED OR USED AS THE BASIS FOR MANUFACTURE OR APPARATUS WITHOUT WRITTEN PERMISSION.

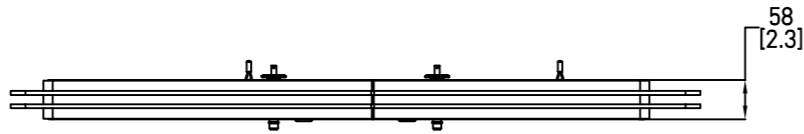
ALL MATERIAL SPECIFIED ON THIS DRAWING SHALL CONTINUALLY COMPLY WITH THE EFFECTIVE EU RoHS DIRECTIVE, CURRENTLY 2011/65/EU, INCLUDING ALL AMENDMENTS.

REVISIONS

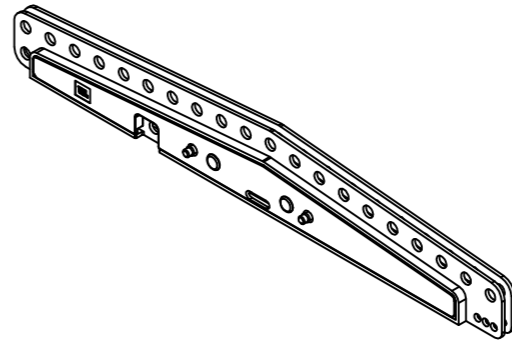
LTR	DESCRIPTION	DRFT	DATE
A	INITIAL RELEASE	KW	06/09/26

D

D

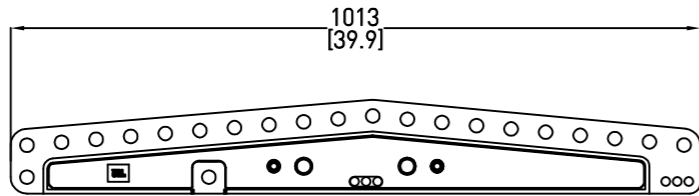


TOP

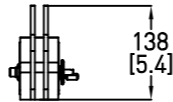


C

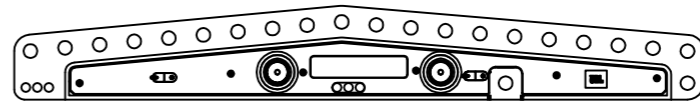
C



LEFT



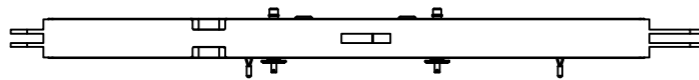
FRONT/REAR



RIGHT

B

B



BOTTOM

A

A

3. MATERIALS: HIGH GRADE STEEL WITH ANTI-CORROSION COATING
2. WEIGHT: 13.6 KG(30 LB)
1. FINISH: BLACK POWDERCOAT

NOTES: (UNLESS OTHERWISE SPECIFIED)

TOLERANCES

(UNLESS OTHERWISE SPECIFIED)

X.XX ± .063 INCH

X.X ± .125 INCH

ANGULAR TOLERANCE OF 0°±30°

FRACTIONAL DIMENSIONS ± 1/32

• DIMENSIONS ARE IN MM (INCHES)

• ALL DIMENSIONS ARE FINISHED DIMENSIONS

• DO NOT SCALE DRAWING

HARMAN

JBL Professional
8500 Balboa Blvd
Northridge, CA 91329
USA

TITLE
CUSTOMER DRAWING,VTX A12 AF EB MKII

SIZE	DRAWING NO.	REV
A	1000390091	A

SCALE	NTS	SHEET	1	OF	1
-------	-----	-------	---	----	---